



Malaysian Timber Certification Council

News

Volume 1, Issue 7, February - March 2007

Tenth Meeting of National Steering Committee (NSC)

The Tenth Meeting of the National Steering Committee (NSC) was held on 27 March 2007 in Kuala Lumpur.

The main aim of the meeting was to discuss the outcomes of the three Regional Consultations as well as the recommendations made by the Third Meeting of the Technical Working Group (TWG) held on 6 February 2007 on the development of the *Malaysian Criteria and Indicators for Forest Management Certification (Forest Plantations)* or in short *MC&I(Forest Plantations)*.

The Meeting considered the various recommendations made by the Regional Consultations and the TWG and has finalised the draft *MC&I(Forest Plantations)* which will be subjected to public comment over a 60-day period. Once the draft *MC&I(Forest Plantations)* is placed on the MTCC website for public comment, all stakeholder groups will be notified and cordially invited to submit their comments to the NSC Secretariat, Yong Teng Koon at email: yongtk@mtcc.com.my or tel: 03-92005008



In this issue

UPDATES	
• Tenth National Steering Committee Meeting	1
MIFF 2007 Industry Seminar Series	2
National Conference on Forest Biodiversity	2
FACTS AND FIGURES	2

Contact Information:

Malaysian Timber Certification Council (MTCC)
19F, Level 19, Tower 1,
Menara PGRM, No. 8,
Jalan Pudu Ulu, Cheras,
56100 Kuala Lumpur, Malaysia
Tel : 603-9200 5008
Fax : 603-9200 6008
E-Mail : info@mtcc.com.my
Website: <http://www.mtcc.com.my>

MIFF 2007 Industry Seminar Series



Ismail Ibrahim, MTCC Manager (Product) (top) making a presentation at the Malaysian International Furniture Fair 2007 Industry Seminar Series held on 9 March 2007 at the PWTC, Kuala Lumpur. The presentation was entitled *Certifying Sustainable Products for the Green Market*, and covered the latest information on MTCC and the implementation of its timber certification scheme, and how timber companies can obtain chain-of-custody certification under the MTCC scheme.

National Conference on Forest Biodiversity

Harnarinder Singh, MTCC Senior Manager (right) made a presentation at the “National Conference on The Management & Conservation of Forest Biodiversity in Malaysia: Forest Biodiversity For Better Life” organised by Forest Department Peninsular Malaysia in collaboration with Universiti Kebangsaan Malaysia (UKM) and supported by the Ministry of Natural Resources and Environment on 20-21 March 2007 at Putrajaya.



Photos courtesy of FDPM

The paper, entitled *Role of Forest Certification in Enhancing Forest Management Practices and Biodiversity Conservation in Malaysia*, provided information on the experiences gained in implementing the MTCC scheme and the areas where forest management certification has played a positive role in enhancing sustainable forest management practice and conserving biodiversity in the certified Forest Management Units in Malaysia.

By Product (in January 2007)

Product	Volume (cu.m)
Sawn timber	3,426.80
Plywood	663.45
Solid wood moulding	413.10
Finger-jointed moulding	19.57
Total	4,522.92

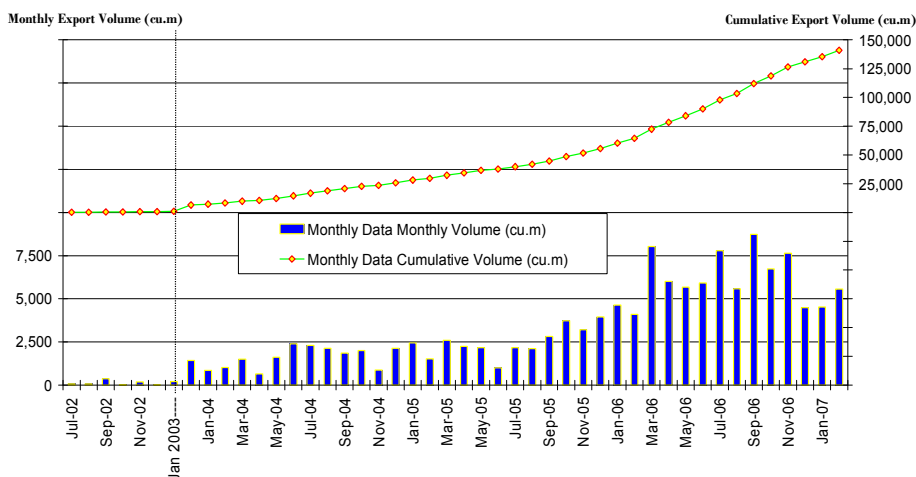
By Destination (in January 2007)

Destination	Volume (cu.m)
The Netherlands	2,523.16
United Kingdom	758.76
Germany	630.29
Belgium	513.64
Italy	63.45
France	33.61
Total	4,522.91

Export of MTCC-Certified Timber Products

Monthly & Cumulative Exports

Source : MTIB / MTCC



Volume exported in January 2007: 4,522.90 cu.m

Volume exported in February 2007: 5,555.74 cu.m

Cumulative volume exported since July 2002: 140,960 cu.m

Holders of Certificate for Forest Management: 9 Forest Management Units

Holders of Certificate for Chain-of-Custody: 101 Timber Companies

Details on the area and map of the FMUs and contact information on MTCC certificate holders can be obtained at: <http://www.mtcc.com.my>

By Product (in February 2007)

Product	Volume (cu.m)
Sawn timber	2,629.84
Plywood	2,819.55
Solid wood moulding	76.29
Finger-jointed moulding	30.10
Total	5,555.78

By Destination (in February 2007)

Destination	Volume (cu.m)
The Netherlands	2,329.39
United Kingdom	2,009.87
Belgium	982.39
Germany	141.11
France	93.00
Total	5,555.76